

Installation Instructions

STEP 1 - CHECK MEASURE

Face Fix

Measure the width from the outer edge of the architrave to the opposite edge. Measure the drop from the top of the architrave to where you want the blind to finish. We recommend 10mm off the floor and 50-100mm below the frame.

We recommend that you take the track past the architrave each side. This will give more privacy and better light control. The distance you take the track is entirely optional. We highly recommend that you add at least 60-100mm. Make sure that you don't have any obstructions.

Recess Fix

Measure the width from the inside of the window frame from left side to right side. Making sure to measure at the top of the reveal and not the bottom of the window, as this is where the track will be mounted.

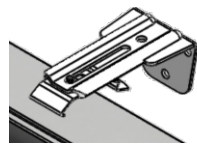
Measure the drop from the top of the inside recess to the base of the inside sill. Measure in 3 places Left, Centre and Right and take the smallest of the three measurements.

Depth Required: You will need a depth of 135mm for the blind to fit neatly inside the recess for 127mm slats and 97mm depth for 89mm slats. Minimum depth required for both slat sizes is 50mm. This will result in the blind slightly protruding out of the recess but will not detract from the product.

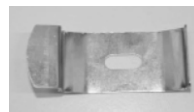
Important: Do not make any deductions as our factory will do this to ensure a perfect fit.

STEP 2 - BRACKETS

The amount of brackets supplied will vary depending on the width of the track.



Face Fix Bracket

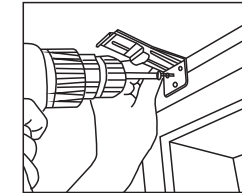


Recess Fit Bracket

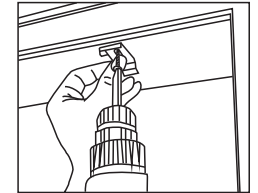
STEP 3 - MOUNTING THE BRACKETS

Mark out the positions for the brackets at the desired even distance. If fitting the blind to the architraves (face fix) and the track has an overhang that goes past the window frame, put the end brackets level with the edge of the architrave. For recessed mounts or face mounts without the overhang, then position the end brackets at least 100mm's in from the end. Evenly space the brackets along the window frame. For Face Fix, make sure to use the central

screw hole on the bracket, this will then give you flexibility to be able to adjust the blind up and down easily to the desired height, without having to reposition the screw.



Face Fix Mount Bracket

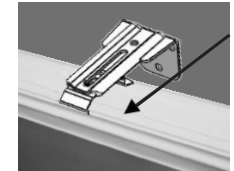


Recess Fix Bracket

STEP 4 - HANGING THE TRACK

Take the Vertical track and starting with the central bracket, hook the front of the track into the forward lip of the bracket. Making sure the track is centre to the window. Now just click the track into place by rotating the back of the track up into the rear of the bracket. You should hear it click into place. Repeat for each bracket.

POSITION OF BRACKET ON TRACK



Hook to front lip on top of track

STEP 5 - HANGING THE SLATS

Rotate track carriers so the hooks face to one end of the track. Spread the carriers out by drawing the wand. Gently unroll slats and hook onto carriers working from one end of the track to the other. Do Not hang whilst carriers are rotated to the flush position to the track. This will cause the slats to not rotate and jam. If your track has a centre opening and chained weights. Open the slats after hanging, then gently partially open the blind and trim the chain in the centre where they are dividing.



Hanging the slats